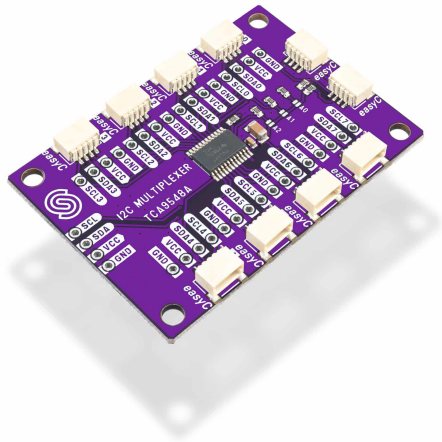




## I2C MULTIPLEXER TCA9548A BREAKOUT

**Weight**

13 g

### DESCRIPTION

Ever needed to connect two peripherals with the same I2C address to the same microcontroller? This module allows you to seamlessly connect up to eight I2C devices with identical addresses.. Using the TCA9548A IC, our breakout board provides flexibility, enabling control of up to 64 devices on the same I2C bus. This means you can integrate numerous sensors, such as 64 BME680s (because why not?), all managed by just one microcontroller, simplifying complex setups and expanding your possibilities.

Beyond its core capabilities, the TCA9548A breakout is engineered for compatibility and ease of use, especially within the Qwiic ecosystem. This adapter is convenient for makers and engineers looking for rapid prototyping solutions without the intricate wiring. Its broad voltage compatibility (1.65V - 5.5V) ensures integration with a wide range of microcontrollers, including Arduino and NULA boards, making it an addition to any electronics workbench. With its compact dimensions and clear pinout, integrating this multiplexer into your existing or new projects is easy and efficient.

This I2C multiplexer is designed and manufactured in the EU, guaranteeing great performance and durability. We offer documentation, quick start guides and dedicated technical support to ensure your success, including our open-source community. Choose our TCA9548A breakout for a high-performance solution that empowers your innovative projects with I2C communication capabilities.

### FEATURES

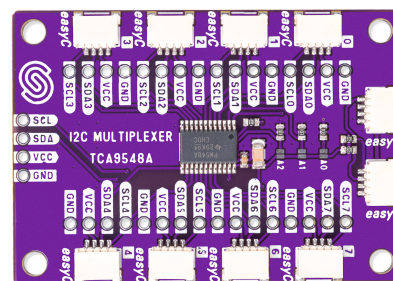
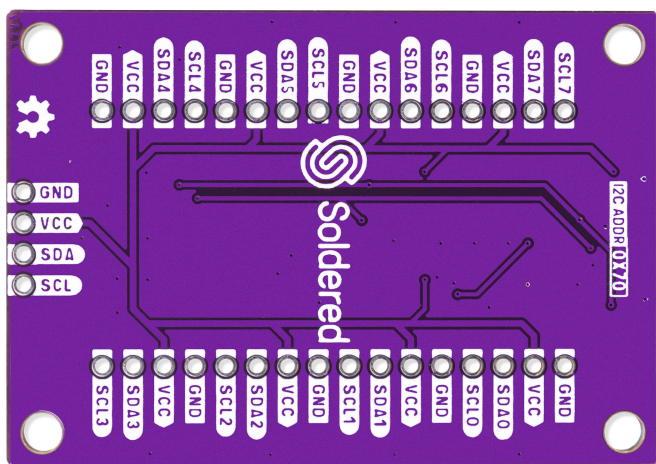
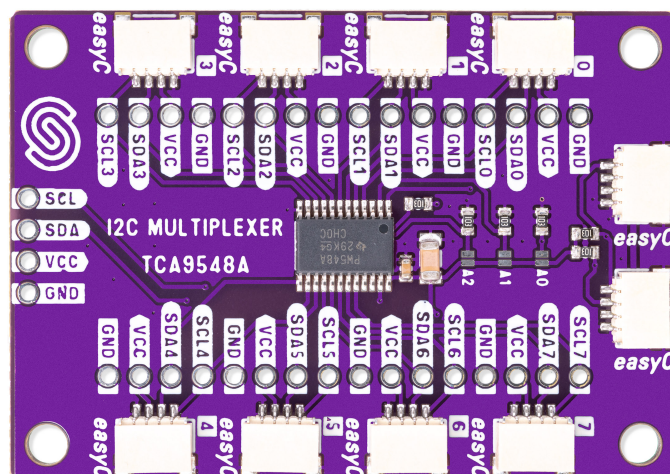
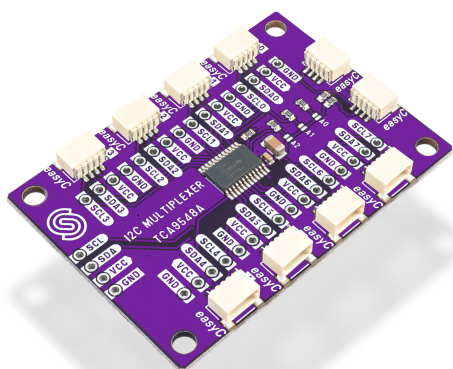
- Based on: TCA9548A
- Voltage: 1.65V - 5.5V
- Default I2C address: 0x70, adjustable via 3 on-board jumpers
- Dimensions: 54 x 38 mm / 2.1 x 1.5 inch



## USEFUL LINKS

- [Datasheet](#)
- [Open-Source Hardware files](#)

## OTHER IMAGES



Weight

13 g